

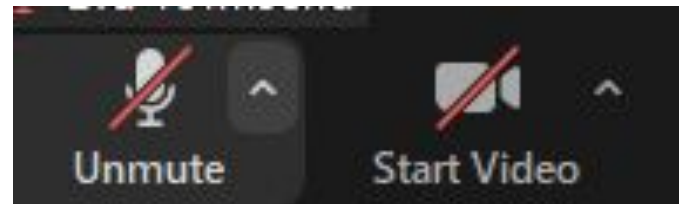
Kindergarten Parent Orientation



Zoom Dialogue Tools

Please mute unless speaking

Questions at the end!





Welcome - Kent Gardens ES

- Holly McGuigan, Principal
- Tia Hawkins, Assistant Principal
- Sarah Talley, Assistant Principal
- Gail Barnett, Instructional Coach
- Eva Townsend, School Based Tech.
- Chrissy D'Amico, Tech Specialist

- Katie Altman and Elizabeth MacDonald, Counselors
- Sheri Emory, Reading Specialist
- Ramita Rana, Nurse Clinician
- Aela Golden, Registered Nurse

Kindergarten Teachers

- Sam Porter
- Ashtin Crawford
- Megan Griffin
- Sophia Schneider

PTA Officers

- Andrea Hager, President
- Amanda Wittman, President Elect
- Jackie Shepard/Jenny Gregory, Treasurer
- Lane Gulotta, Enrichment



FCPS Early Childhood Education Philosophy

The Kindergarten program:

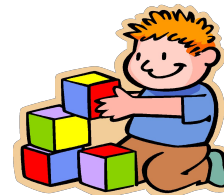
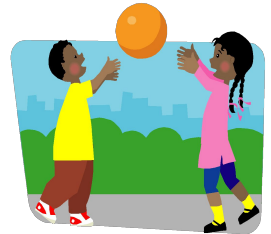
- Focuses on language development
- Promotes an appreciation for diversity
- Incorporates active learning
- Provides opportunities for investigation, exploration, and discovery
- Encourages a positive self-concept
- Promotes creative expression
- Fosters positive interaction with others

Typical Full-Day Kindergarten Schedule

- Arrival and Morning Routine
- Greeting/Morning Meeting
- Language Arts
- Literacy Stations
- Lunch
- Special Subjects
- Recess



- Writing
- Math Workshop
- Snack and Recess
- Science/Social Studies
- Free Centers/Dramatic Play
- Closing Circle/Dismissal



Language Arts

Fosters literacy learning through lessons and engagement in print-rich experiences to develop:

- Oral Language

- ☐ Listening
- ☐ Speaking
- ☐ Phonemic Awareness
- ☐ Story Retelling



- Reading

- ☐ Print Awareness
- ☐ Read Aloud
- ☐ Alphabet Identification
- ☐ Shared Reading
- ☐ Phonics
- ☐ Independent Reading



- Writing

- ☐ Drawing
- ☐ Interactive Writing
- ☐ Writing
- ☐ Shared Writing
- ☐ Sharing
- ☐ Independent Writing

Mathematics



Facilitates active hands-on learning experiences through the development of:

- Patterns, Functions, and Algebra (Sort and Classify Objects, Patterns, Fractions)
- Geometry and Measurement (Shapes, Comparisons, Money)
- Numbers and Number Sense (Counting, 10-Frames, Estimating)
- Computation and Estimation (Use Objects to Add and Subtract to Ten)
- Problem Solving and Applications (Share Real-life Experiences)
- Probability and Statistics (Graphs, Charts)

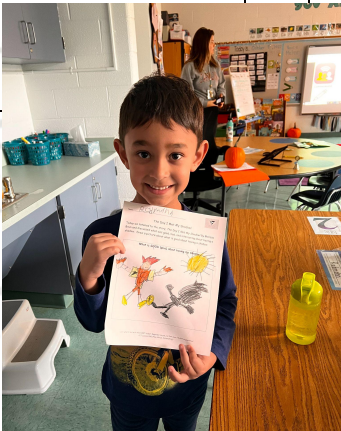


Science/Social Studies/Health

Daily lessons on the following utilizing journals and hands on activities.

Social Studies:

- History
- Economics
- Geography
- Civics



Science:

- Living Systems
- Earth and Space
- Investigation
- Physical

Health:

- Family
- Health/Safety
- Personal Hygiene



Special Subjects

- Physical Education
- Art
- Music
- Library
- Guidance
- French
- Advanced Academic Lessons
- STEAM



Kindergarten Events

- Fall Festival
- Gingerbread Man
- Valentine's Day
- 100th Day of School
- Literacy Week
- STEAM/Math Week
- Leprechaun Day
- KG Spring Spectacular!
- Field Day
- Field Trips
- End of Year Performance



Logistics and Procedures

- Arrival: Students arrive at 8:40 a.m.
- Morning work upon arrival
- 8:50 a.m. late bell; 9:00 a.m. Tardy
- Students are dismissed at 3:35 p.m.
- Lunch and Snack
 - Snack is every day, M-F
 - Students can bring or buy a lunch
 - Water bottles - (with name on it)
 - Allergies and clean hands



Arrival and Dismissal Procedures

- Walkers
 - Walk through front door
 - Dismissal through escort to Door #8 to be met by parent or guardian
- Bus Riders
 - Escorted by patrols or other adult to/from
- Kiss and Ride
 - Escorted by an adult for dismissal
- SACC
 - Escorted by an adult

***Parents/guardians may escort their child to their classroom on the first day of school. Our goal is independence!**

#kgpride

- Patient
- Respectful
- Inclusive
- Doing our best
- Excited to learn
- #strongertogether #WeAllBelong



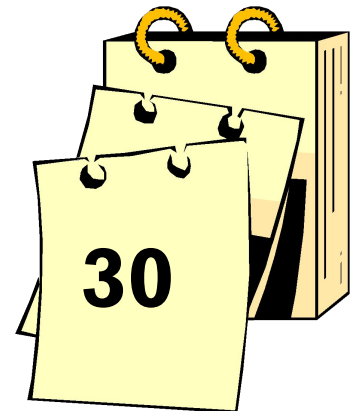


Teaching the Whole Child

- At Kent Gardens we emphasize:
 - Academic - love of learning
 - Emotional - feel safe and connected
 - Citizenship/Responsibility - care for each other and school
 - Community - friendship across class/grade level
- [FCPS Kindergarten Welcome Video](#)

Kindergarten Age Requirements

- Students must be 5 years old by September 30th.
- There are NO exceptions to this requirement.





The Health Room (School Clinic)

- Aelee Golden RN, MSN, Public Health Nurse
 - Covers multiple schools, at KG weekly
 - Responsible for coordinating the plan of care for students with chronic health conditions
 - Supervision of the day to day operations of the Health Room (clinic).
- Ramita Rana, School Health Aide - present daily
 - Delivers care to sick and injured students according to specific guidelines of care plan
 - Administers medications.

Health Conditions

- Emergency Care Card AND the Health Information Form forms are important! This information will be shared only with staff members who need to know. Emergency Care Card should include the names of neighbors, friends or family members who would be able to pick up if needed
- Parent Vue - This link support families with access to various FCPS and Kent Gardens tools.



Illness

- Students who have fevers, vomiting or diarrhea or other symptoms of communicable diseases such as rashes or eye irritation should remain at home
- Students should not return to school until they have been symptom free (without medication) for 24 hours or a health care provider gives them permission to return to school (please provide physician note to clinic.)

Medications

- If medication needs to be given in school, either on a regular basis or occasionally as needed, it needs to be provided by the parents (no medications are on hand in school).
- Authorization forms for medications are [available online](#). There are Medication Authorization, Inhaler Authorization and Epinephrine Authorization forms available.
- Parents can authorize over the counter medications for treatment of headache, muscle aches, orthodontic pain or menstrual cramps. Most other medications need a health care provider's signature.
- Medications **must** be transported to and from school by a parent.
- Medications **must** be kept in the health room or other school approved location.
- Questions? Email our Public Health Nurse (agolden2@fcps.edu)



How do I help my child prepare for Kindergarten?

- **Read with your child everyday!**
- Letter and Number recognition
- Letter sounds
- Cutting and pasting
- Drawing and describing detailed pictures
- Writing their names
- Counting to 30
- Discuss books, ask questions, make connections and predictions
- Help child practice:
 - Opening containers
 - Tearing open food packets
 - Zipping, buttoning, tying
- Playdates with same-age peers

Educating Your Child - Together as Partners!

Tell us about your child!

- Join us for the school tour on 4/13 from 2:15 - 3:15 p.m. - [sign up here](#)
- Tell us about your child - Complete [Google form](#) by 6/4
- Register by Emailing Tracy Dean, tadean@fcps.edu ([info](#) on KG Website)
- Health Information - share when registering and complete appropriate [Health Care forms](#) from FCPS website
- FCPS [registration forms](#)

Becoming Familiar with Kent Gardens

- Once registered you will receive News You Choose and The ROAR (PTA announcements)
- You can always enroll now for News You Choose by going to www.fcps.edu and self enrolling by choosing Kent Gardens
- Kindergarten Play Dates - Tentative dates
 - Saturday, May 20 - 10:00 am-12:00 noon
 - Sunday, June 25 - 9:00am-11:00am
 - Wednesday, July 19 - 6:00pm-8:00pm
 - Wednesday, August 16 - 6:00 pm- 7:00 pm
- Follow on Facebook @KentGardensES
- Follow on Twitter @KentGardens

Important Dates

- Register Now! (Ask your friends to do this, too!)
- Class Assignments - Week prior to August 21
- Bus Schedule - Week prior to August 21
 - Transportation will text/email parents
- School Calendar (All dates subject to change)
 - New Family Gathering - August 10
 - Open House - August 17
 - Return to School - August 21
 - Back to School Night - August 30 or Aug 31 (TBD)

Kindergarten Helpful Information

- Backpack - please make sure your child's full-size backpack is large enough to hold Friday folder, daily folder, snack, and a library book. Please label all coats, mittens, hats, water bottles etc.





FAQs

- What is the kindergarten class size?
- What forms do I need to turn in for my child?
- Attendance Links -Tardy, Early Pick Up
- Lunch - MySchoolBucks

Questions?

Raising Your Hand!

Hover your mouse toward the bottom of your Zoom screen

